

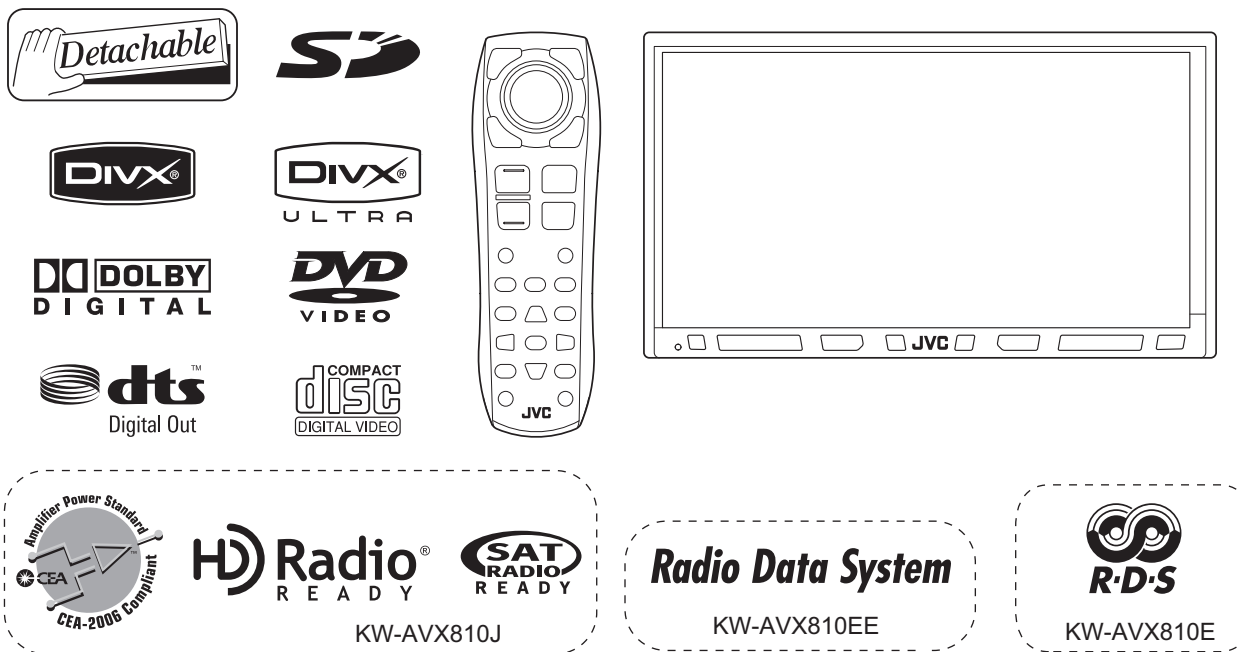
JVC

SCHEMATIC DIAGRAMS

DVD RECEIVER WITH MONITOR

KW-AVX810J, KW-AVX810E, KW-AVX810EU
KW-AVX810EE, KW-AVX810U, KW-AVX810UN
KW-AVX810UT, KW-AVX810A, KW-AVX814UI

DVD-ROM No.SML2008Q1



Lead free solder used in the board (material : Sn-Ag-Cu, melting point : 219 Centigrade)
Lead free solder used in the board (material : Sn-Cu, melting point : 230 Centigrade)

Contents

Block diagram	2-1
Standard schematic diagrams	2-2
Printed circuit boards	2-7 to 10

Safety precaution

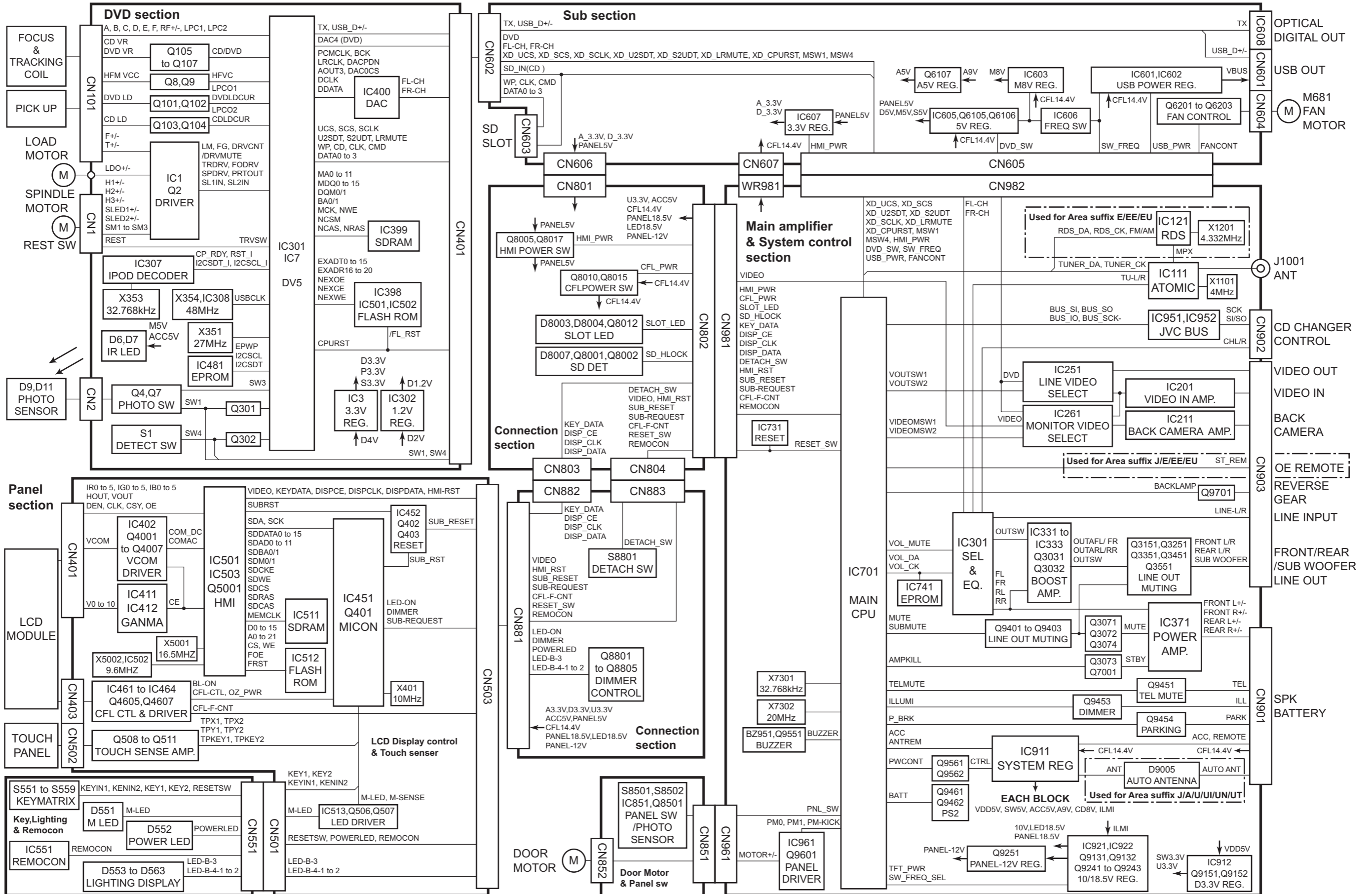


CAUTION Burrs formed during molding may be left over on some parts of the chassis. Therefore, pay attention to such burrs in the case of performing repair of this system.



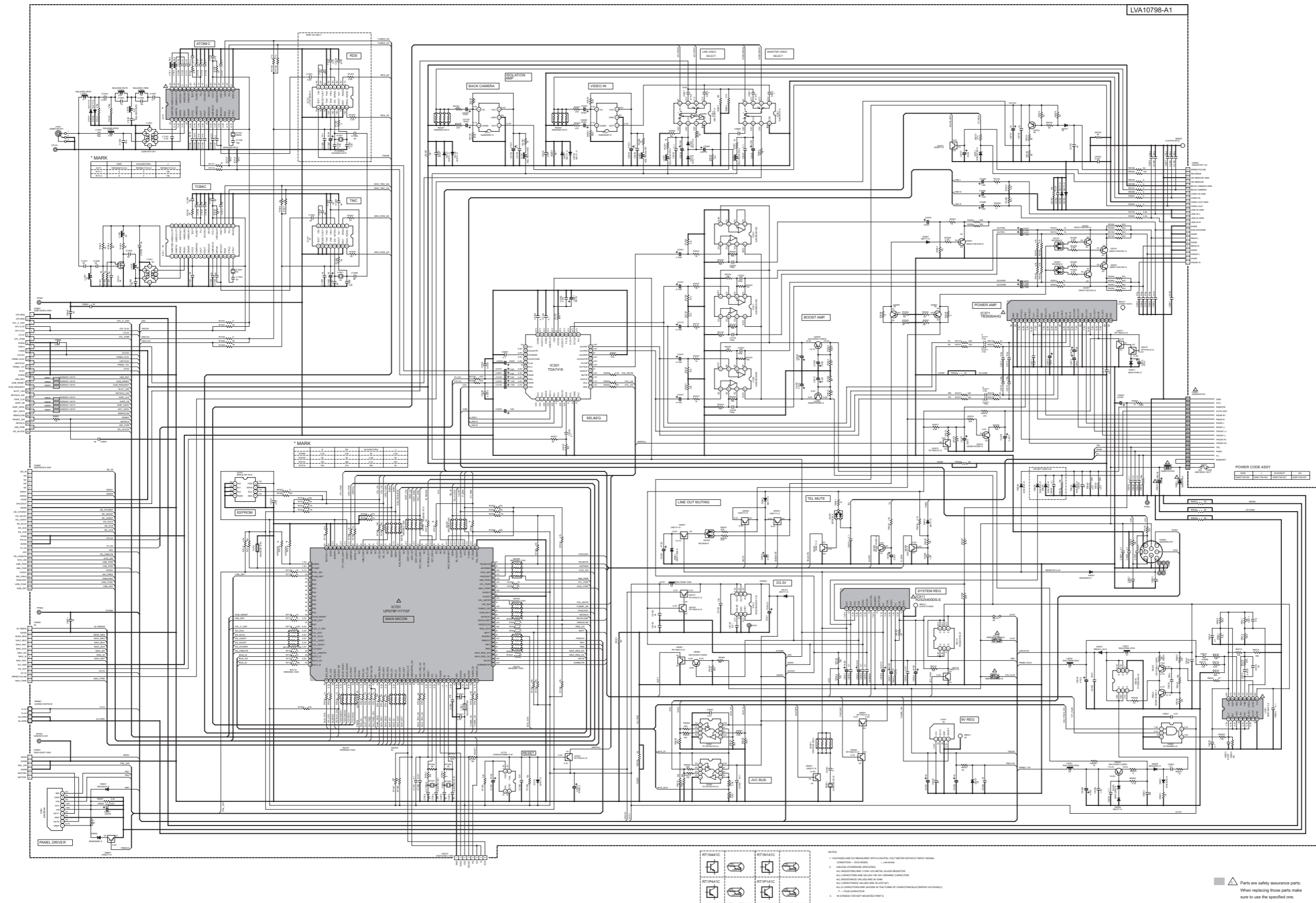
CAUTION Please use enough caution not to see the beam directly or touch it in case of an adjustment or operation check.

Block diagram

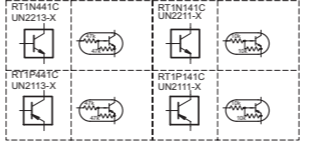
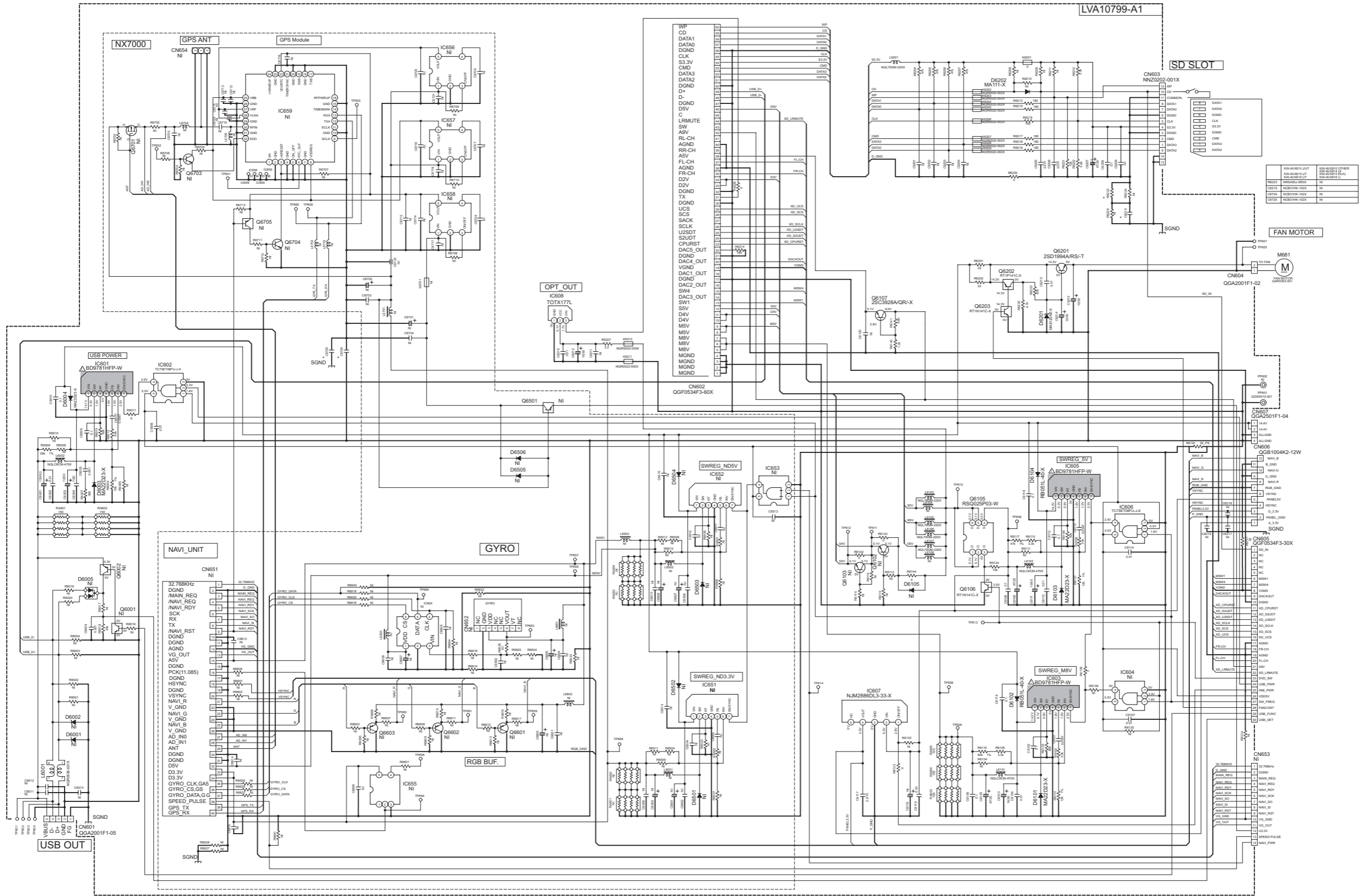


Standard schematic diagrams

■ Main section



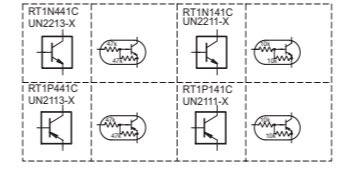
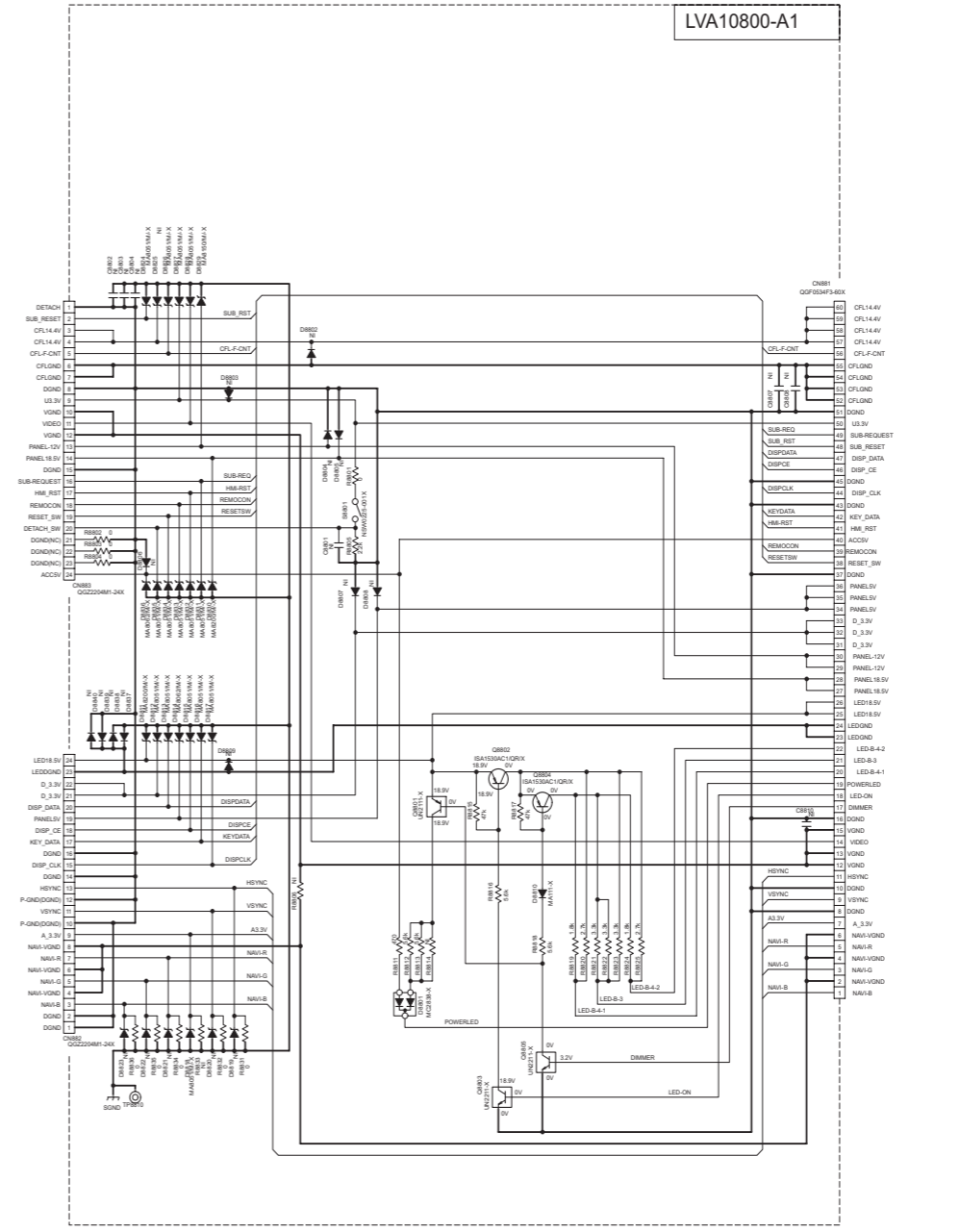
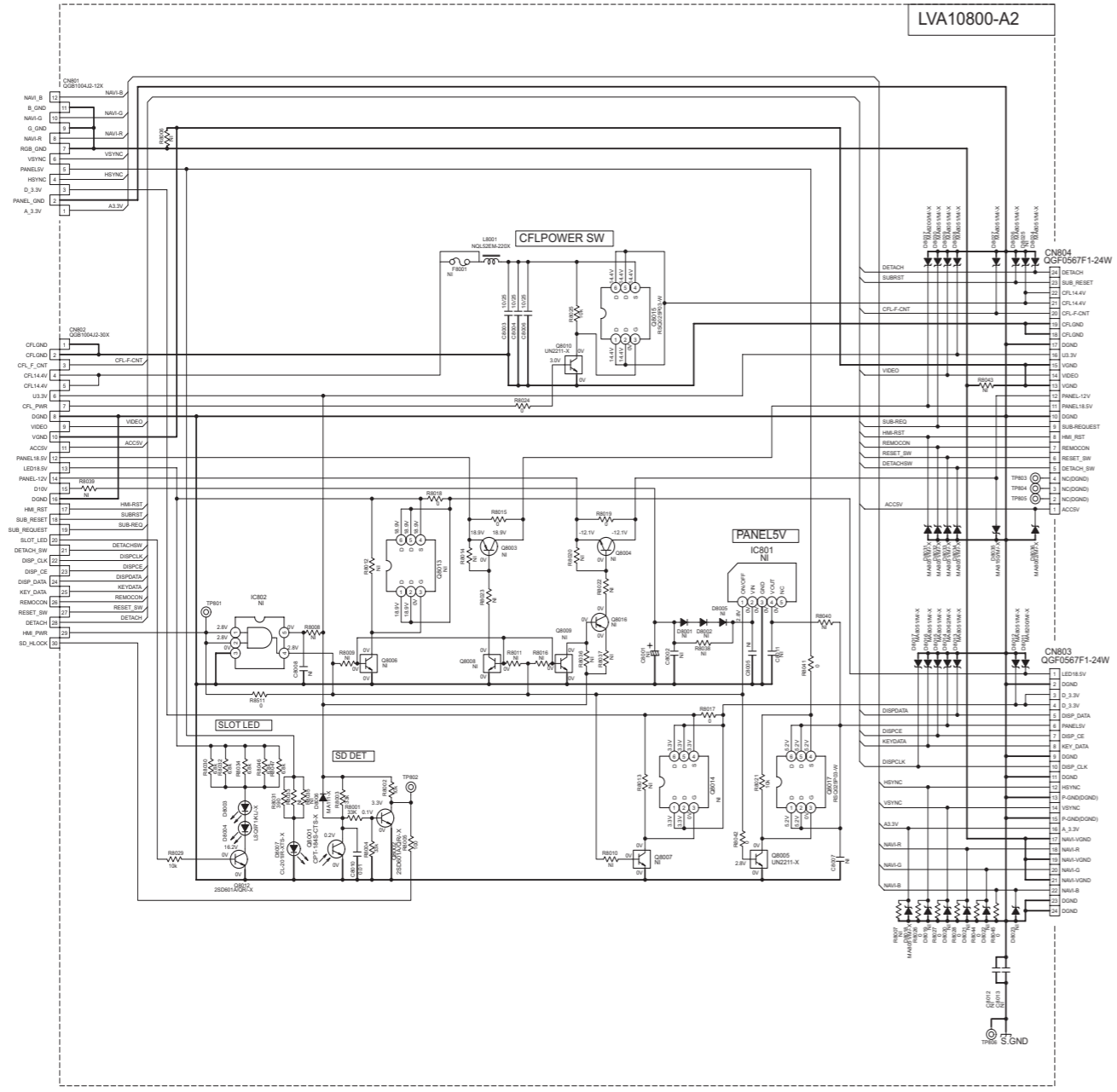
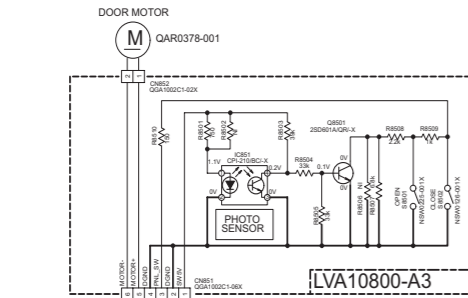
■ Sub section



NOTES
 1 VOLTAGES ARE DC MEASURED WITH A DIGITAL VOLT METER WITHOUT INPUT SIGNAL.
 2 UNLESS OTHERWISE SPECIFIED.
 3 UNLESS OTHERWISE SPECIFIED.
 4 ALL RESISTORS ARE 1/16W 5% METAL GLAZE RESISTOR.
 5 ALL CAPACITORS ARE 50V/25V CERAMIC CAPACITOR.
 6 ALL CAPACITANCE VALUES ARE IN (P/F/PF).
 7 ALL ELECTROLYTIC CAPACITORS ARE SHOWN IN THE FORM OF CAPACITANCE/(RATED VOLTAGE).
 8 F = FILM CAPACITOR.
 9 3IN STANDS FOR NOT MOUNTED PARTS.

Parts are safety assurance parts.
 When replacing those parts make sure to use the specified one.

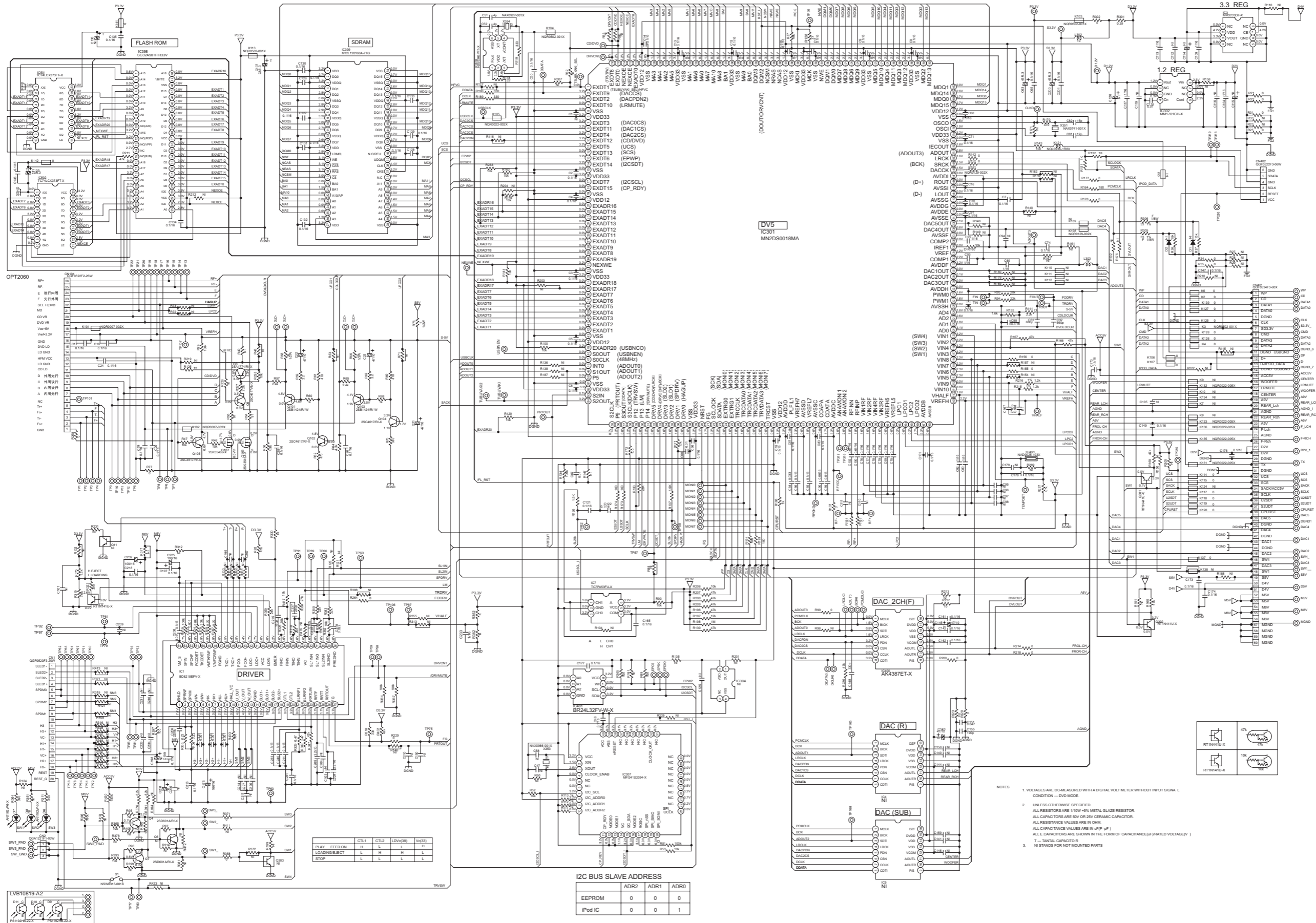
■ Panel 2 / Front section



NOTES

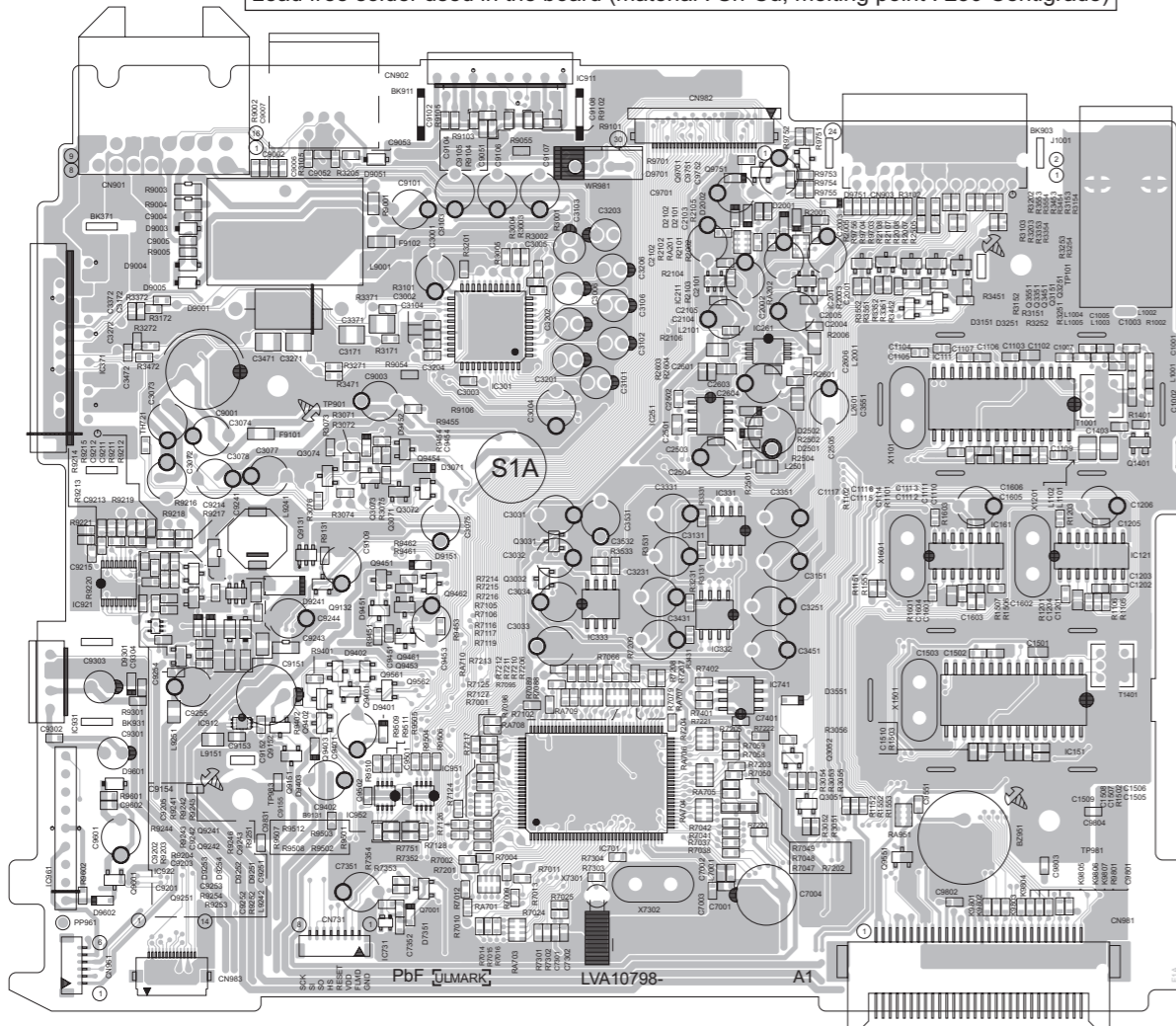
- VOLTAGES ARE DC MEASURED WITH A DIGITAL VOLT METER WITHOUT INPUT SIGNAL CONDITION – DVD MODE
- UNLESS OTHERWISE SPECIFIED:
 - ALL RESISTORS ARE 1/10W ±5% METAL GLAZE RESISTOR
 - ALL CAPACITORS ARE 50V/25V OR 16V CERAMIC CAPACITOR
 - ALL RESISTANCE VALUES ARE IN OHM
 - ALL CAPACITANCE VALUES ARE IN nF(µF)
 - ALL C-CAPACITORS ARE SHOWN IN THE FORM OF CAPACITANCE/(RATED VOLTAGE(V))
 - F – FILM CAPACITOR
 - N1 STANDS FOR NOT MOUNTED PARTS

■ Front end section

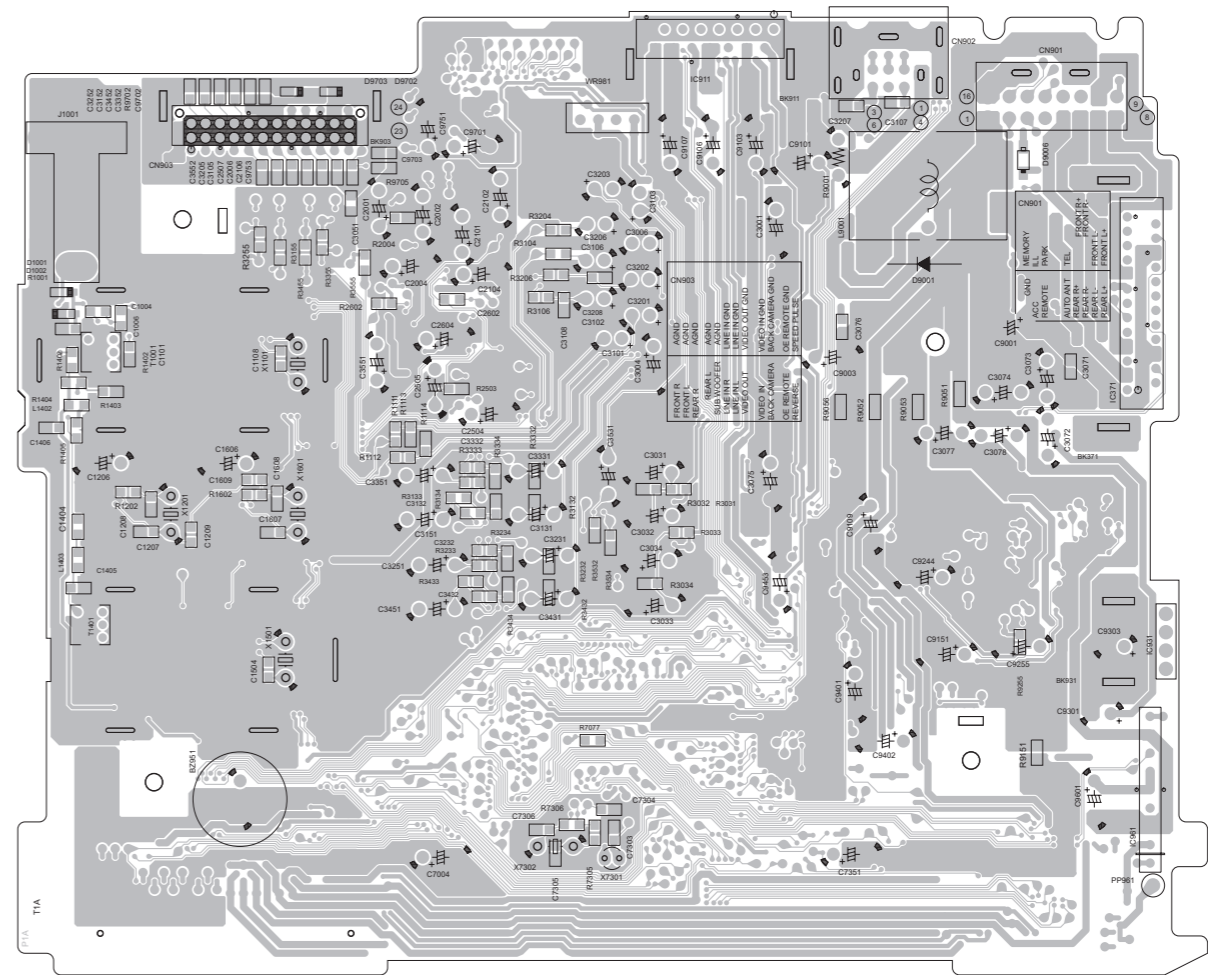


Printed circuit boards

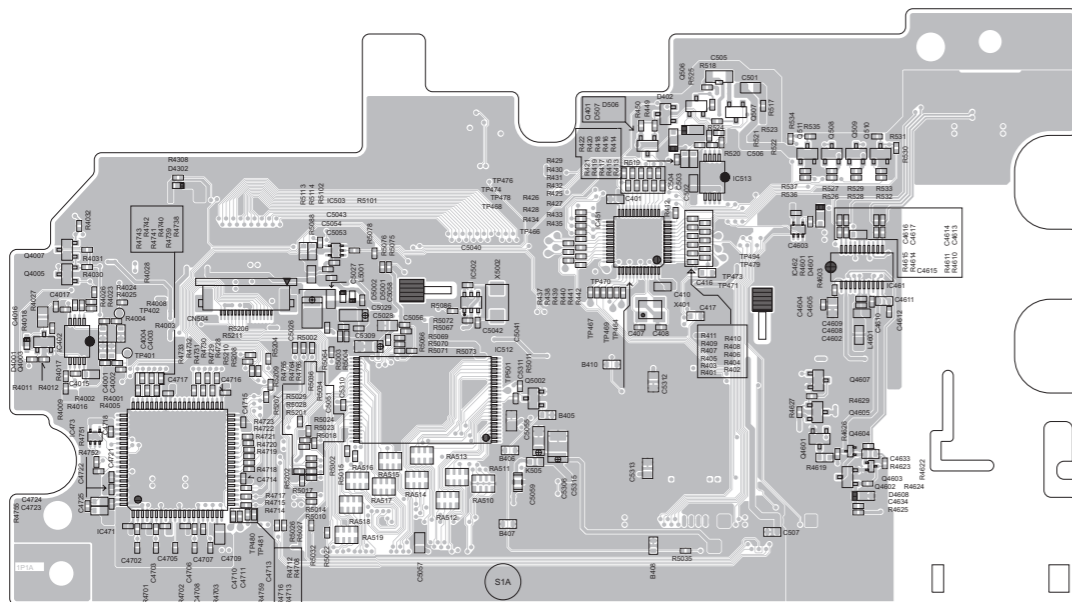
- Main board**
 - Lead free solder used in the board (material : Sn-Ag-Cu, melting point : 219 Centigrade)
 - Lead free solder used in the board (material : Sn-Cu, melting point : 230 Centigrade)



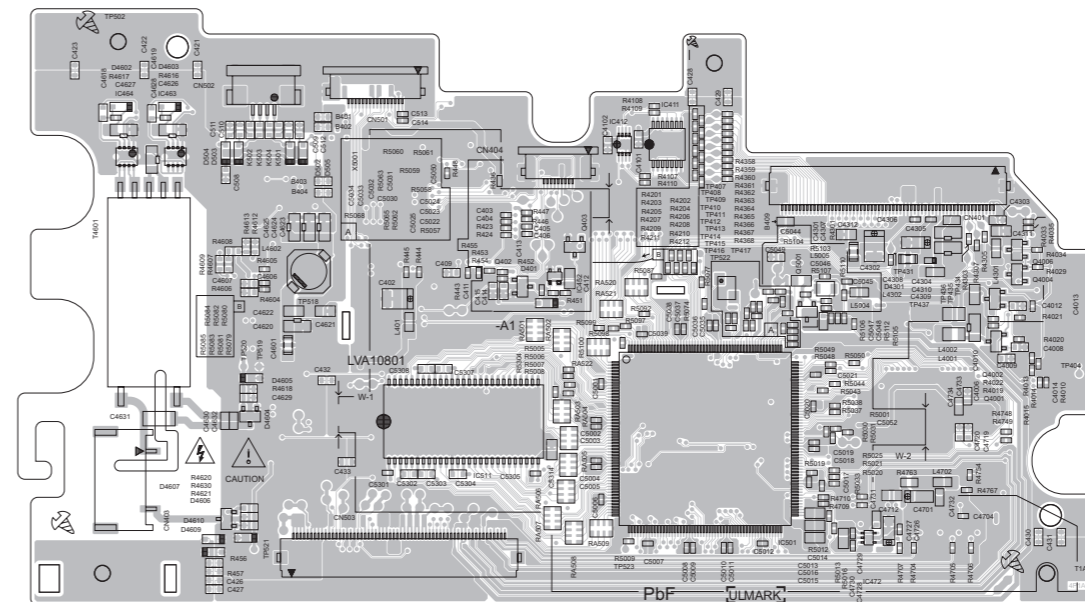
reverse side



- Panel board**
 - Lead free solder used in the board (material : Sn-Ag-Cu, melting point : 219 Centigrade)
 - Lead free solder used in the board (material : Sn-Cu, melting point : 230 Centigrade)



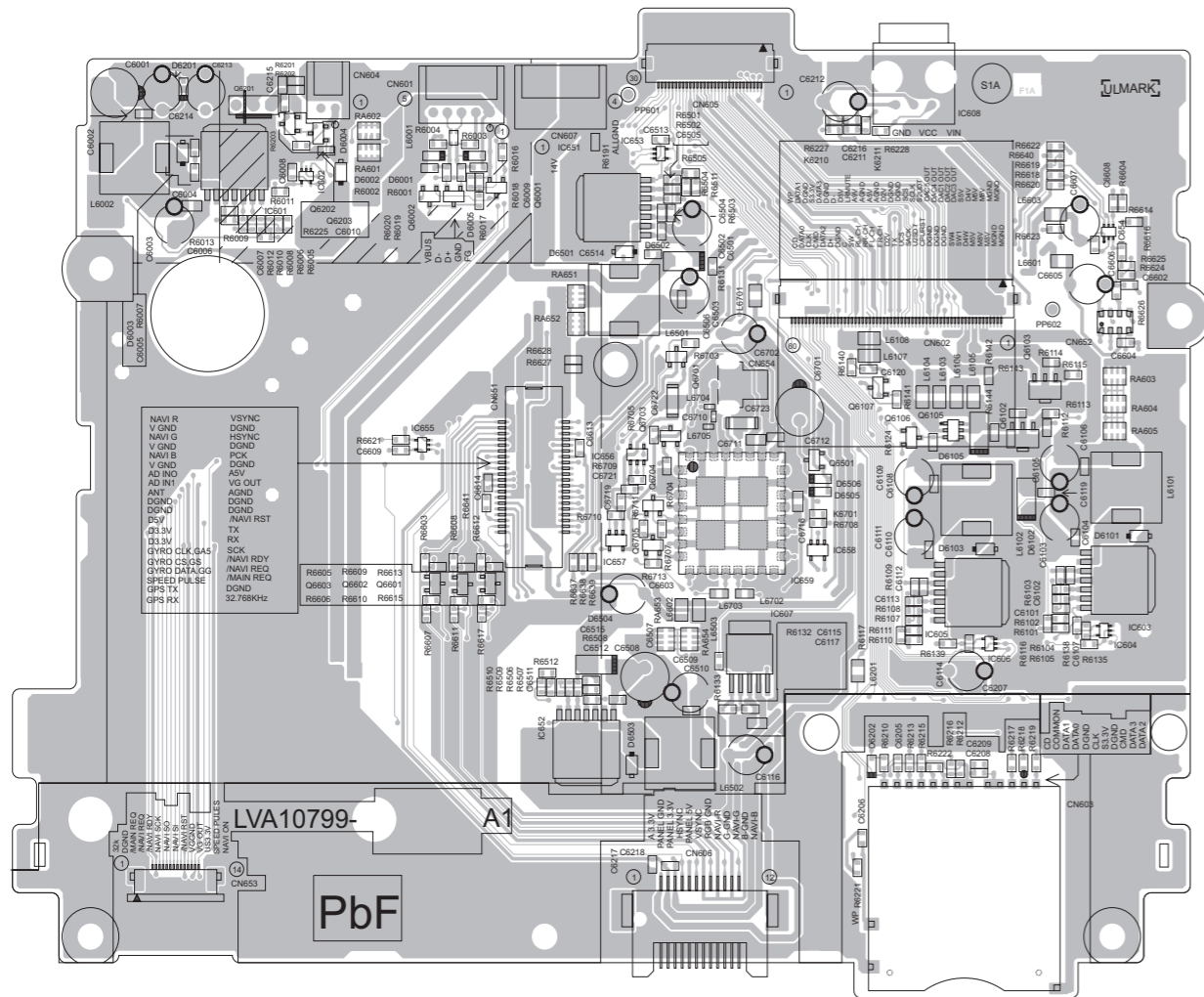
reverse side



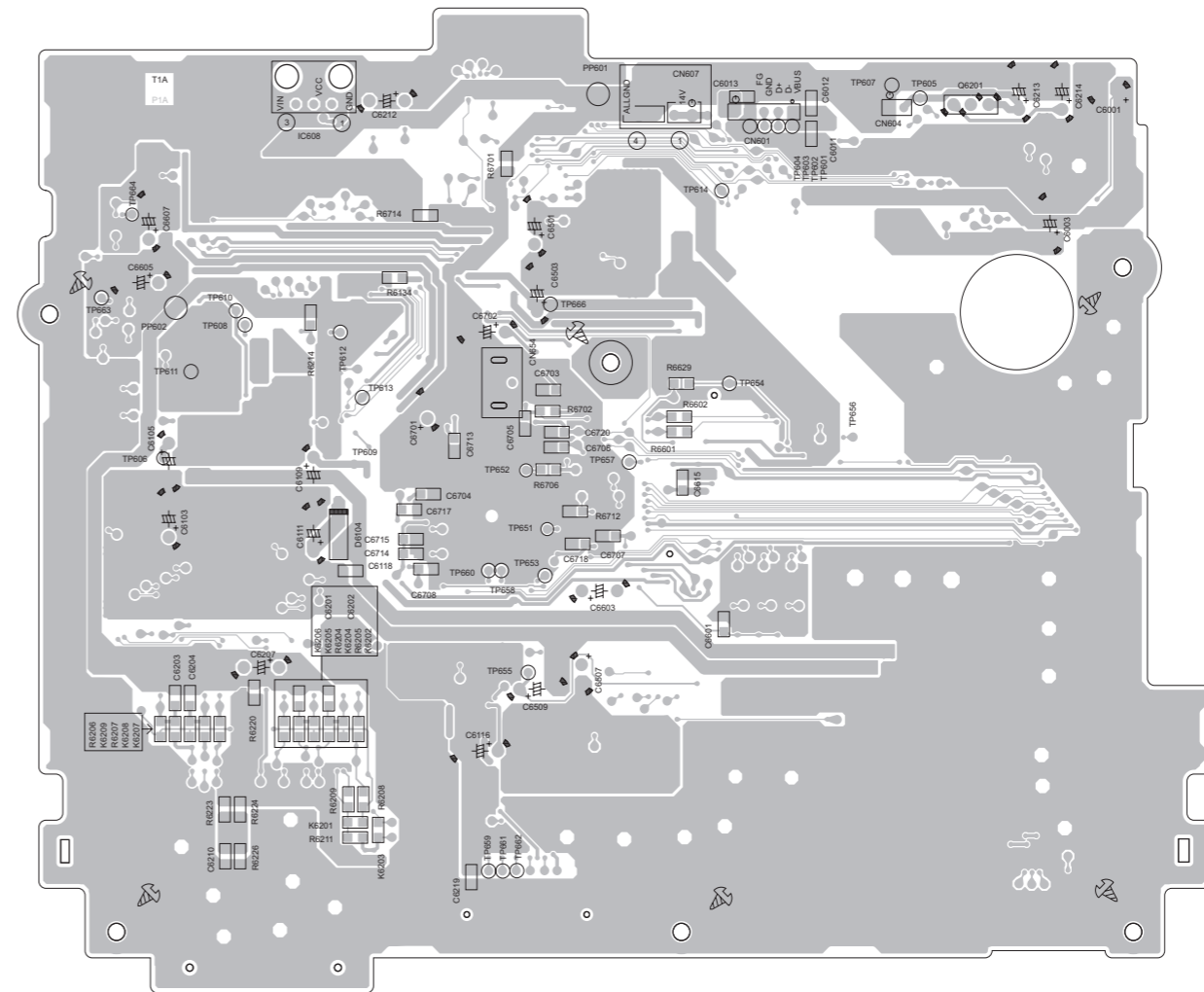
■ **Sub board**
forward side

Lead free solder used in the board (material : Sn-Ag-Cu, melting point : 219 Centigrade)

Lead free solder used in the board (material : Sn-Cu, melting point : 230 Centigrade)



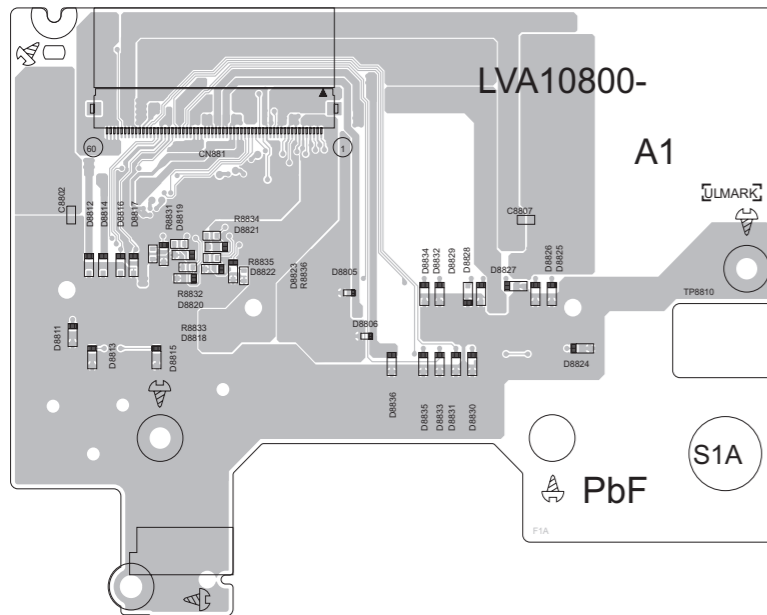
reverse side



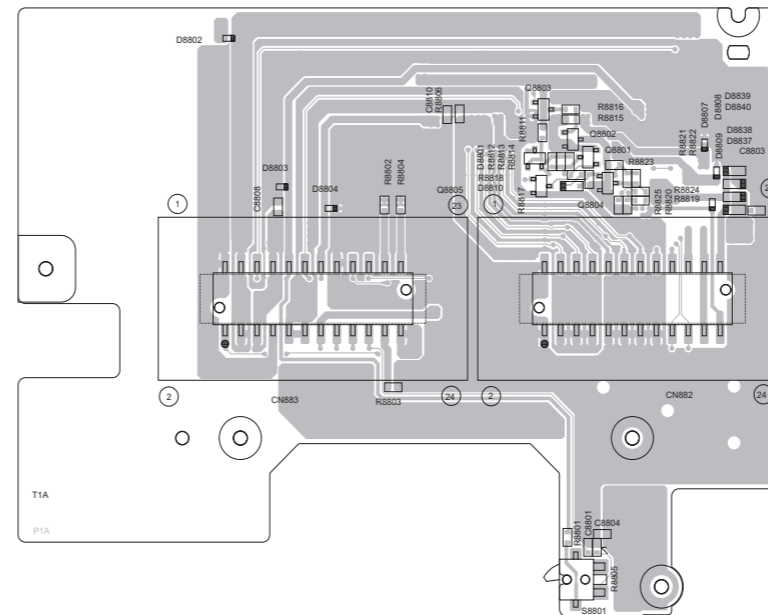
■ **Connection board**
forward side

Lead free solder used in the board (material : Sn-Ag-Cu, melting point : 219 Centigrade)

Lead free solder used in the board (material : Sn-Cu, melting point : 230 Centigrade)



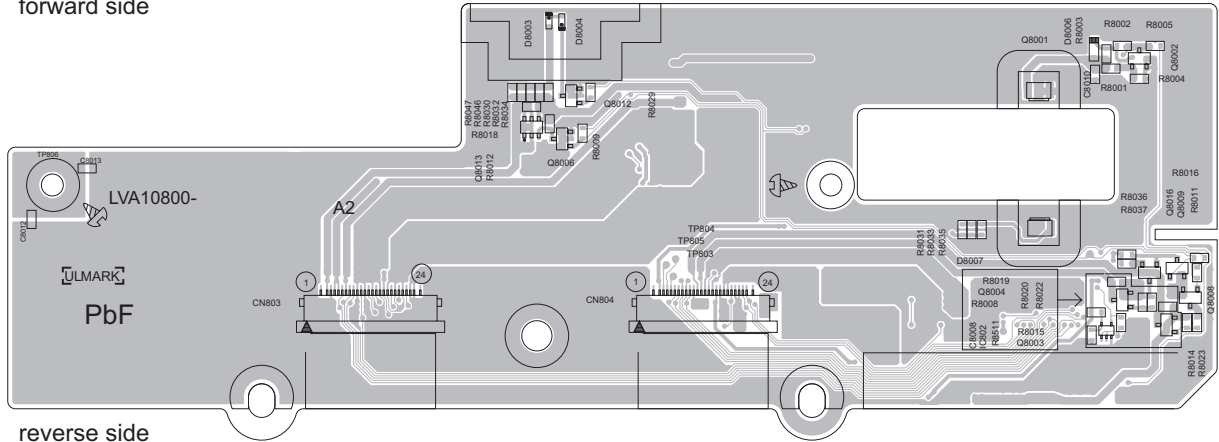
reverse side



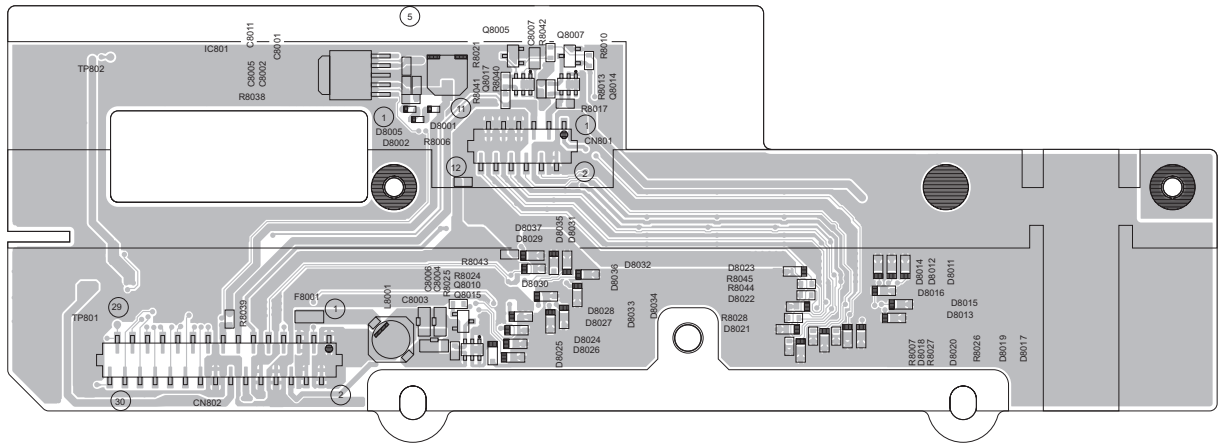
■ **Front board** Lead free solder used in the board (material : Sn-Ag-Cu, melting point : 219 Centigrade)

Lead free solder used in the board (material : Sn-Cu, melting point : 230 Centigrade)

forward side



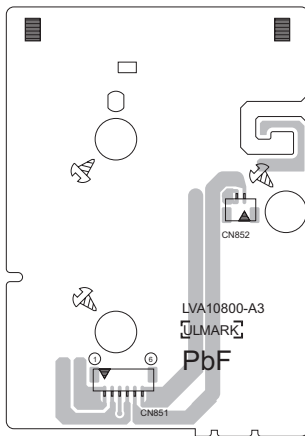
reverse side



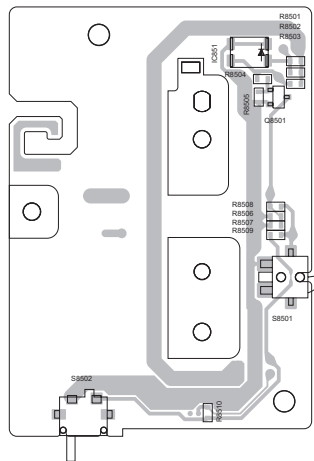
■ **Door board** Lead free solder used in the board (material : Sn-Ag-Cu, melting point : 219 Centigrade)

Lead free solder used in the board (material : Sn-Cu, melting point : 230 Centigrade)

forward side



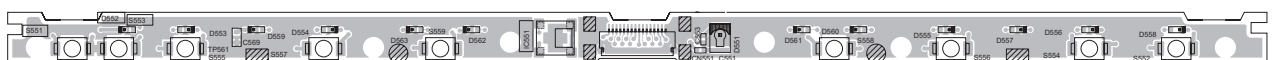
reverse side



■ **Switch board** Lead free solder used in the board (material : Sn-Ag-Cu, melting point : 219 Centigrade)

Lead free solder used in the board (material : Sn-Cu, melting point : 230 Centigrade)

forward side



reverse side

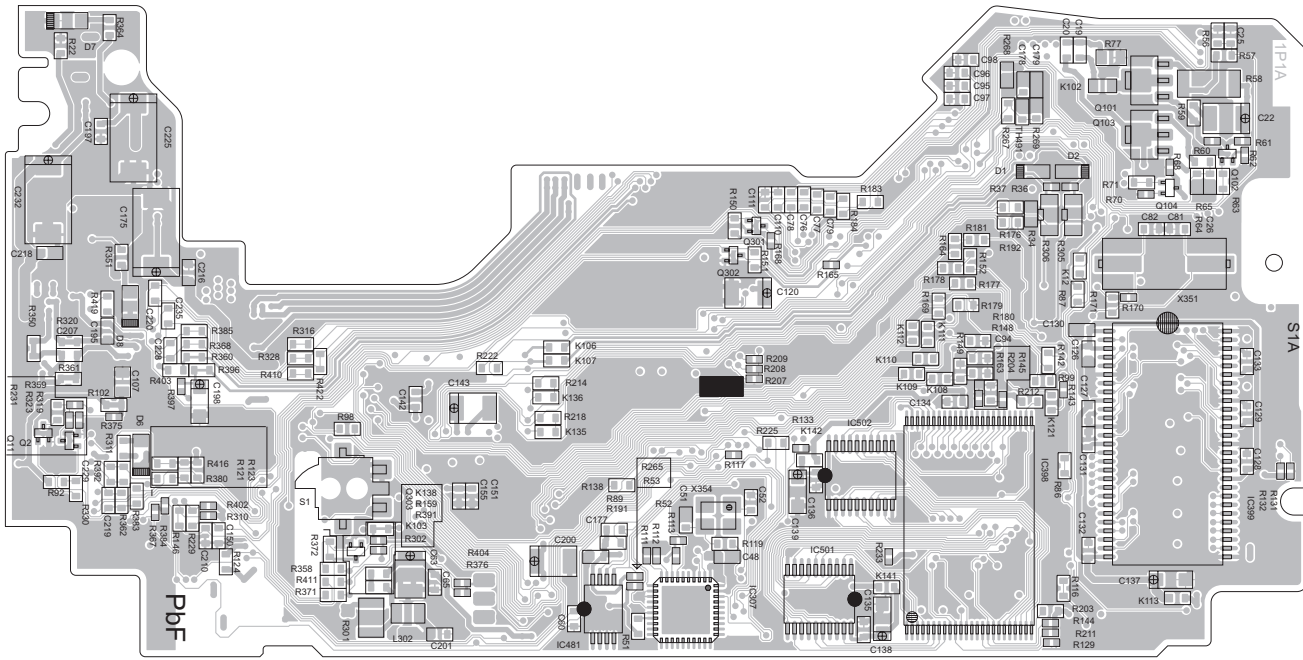


Front end board

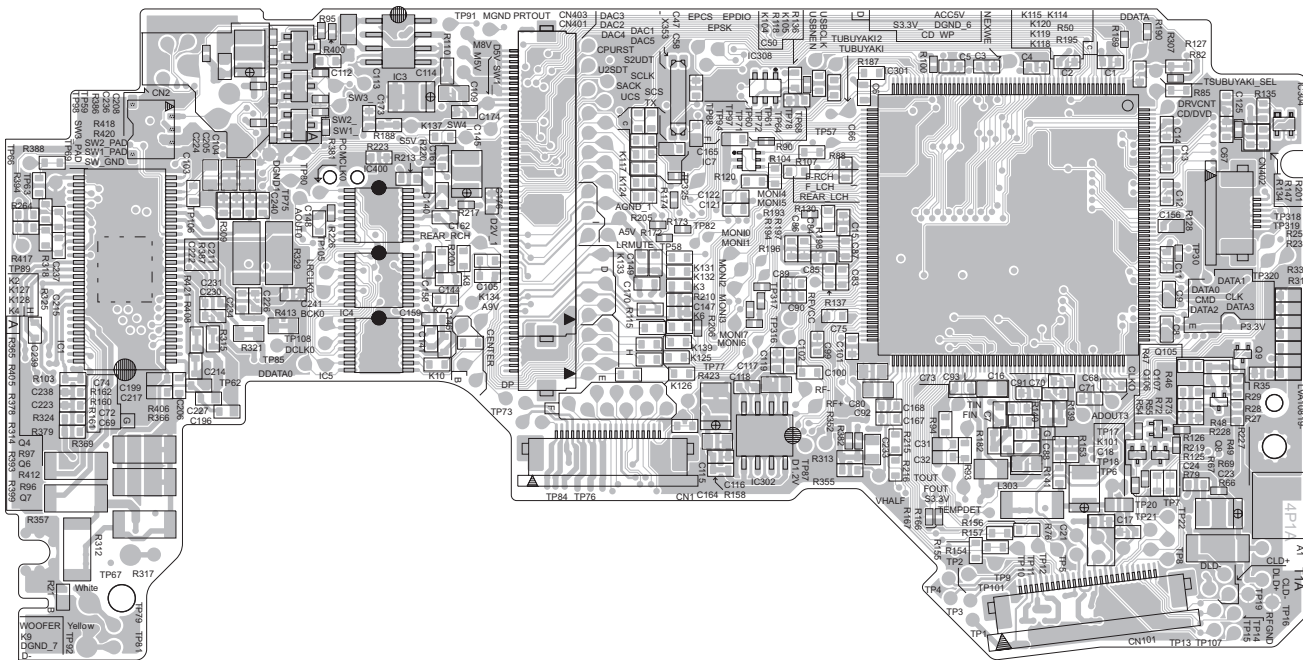
Lead free solder used in the board (material : Sn-Ag-Cu, melting point : 219 Centigrade)

Lead free solder used in the board (material : Sn-Cu, melting point : 230 Centigrade)

forward side



reverse side



< MEMO >



Victor Company of Japan, Limited

Mobile Entertainment Business Group Mobile Entertainment Category 10-1, 1chome, Ohwatari-machi, Maebashi-city, Gumma-ken, 371-8543, Japan

(No.MA403SCH<Rev.001>)

Printed in Japan
VPT